

Exclusive Luxury Homes
in the Athens Riviera

Your Gateway to Luxury
Living near the Sea

Home

Project: Aetheria Residential Collection

3 level Ground Maisonette | 1
Design: Omniview



Design Vision by Omniview

Aetheria, by Omniview, is shaped by structure and restraint — eight homes carved into a calm, sculptural geometry defined by repetition, balance, and precision. The building hides complexity behind simplicity, integrating architectural, interior, and landscape design into a seamless whole.

What you see is clarity. What you feel is calm.



Ground Maisonettes

- I1 — 237.31 m²
- I2 — 272.74 m²
- I3 — 210.07 m²

Apartments

- A1 — 102.48 m²
- A2 — 84.97 m²
- A3 — 67.70 m²

Penthouse Maisonettes

- B1 — 158.49 m²
- B2 — 227.44 m²



Omniview architecture. Boutique scale. Only eight homes.

Three levels of privacy, clarity, and structure.

Private garden 256 m² with pool and BBQ area — nothing shared.

237 m² interior: designed for flow, function, and calm.

Smart home. A++. VRV. Underfloor heating.

Materials that speak in silence: wide oak, slim doors, orthoblock.

Aetheria is not for everyone.
It is for one.



The Property

Maisonette 11 - 237,31 m²

	Living Room	Dining Room	Kitchen	Bedroom/s	Walk in Closet	Bathroom/s	WC	Office	Auxiliary Space	Laundry	Storage in house	Fireplace Bioethanol	Wardrobe	BBQ Area	Swimming Pool	Garden	Parking Spot/s
237,31 m ²				2	1	2		1									
MEZZANINE 78,94 m ²																	
GROUND 91,58 m ²	1	1	1				1				✓	✓	✓	✓	✓		
UNDER 56,50 m ²				1	1			1	1	✓						1B	
	10,29 m ²																

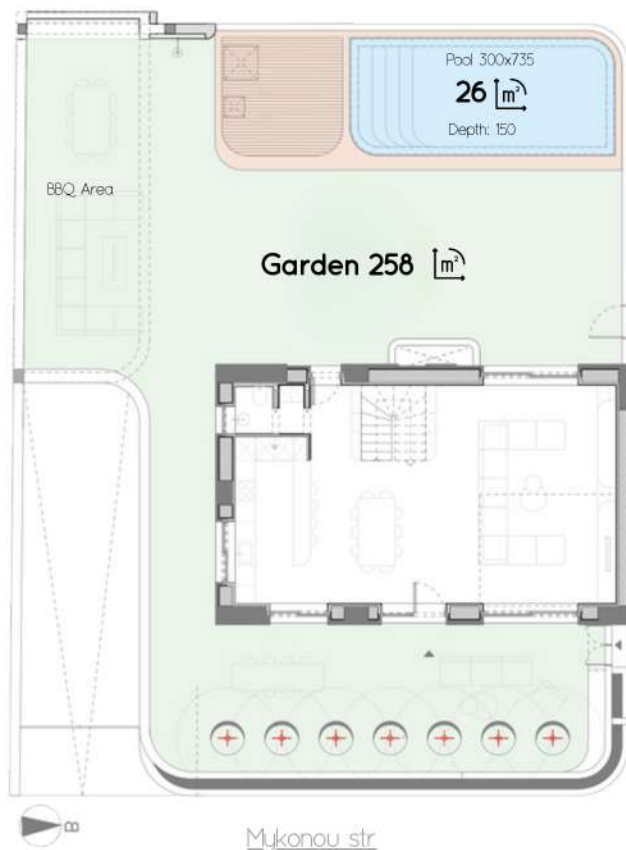
- | 3 Levels
- | Groundfloor, Mezzanine, Basement
- | Private Pool & Garden 256 sqm

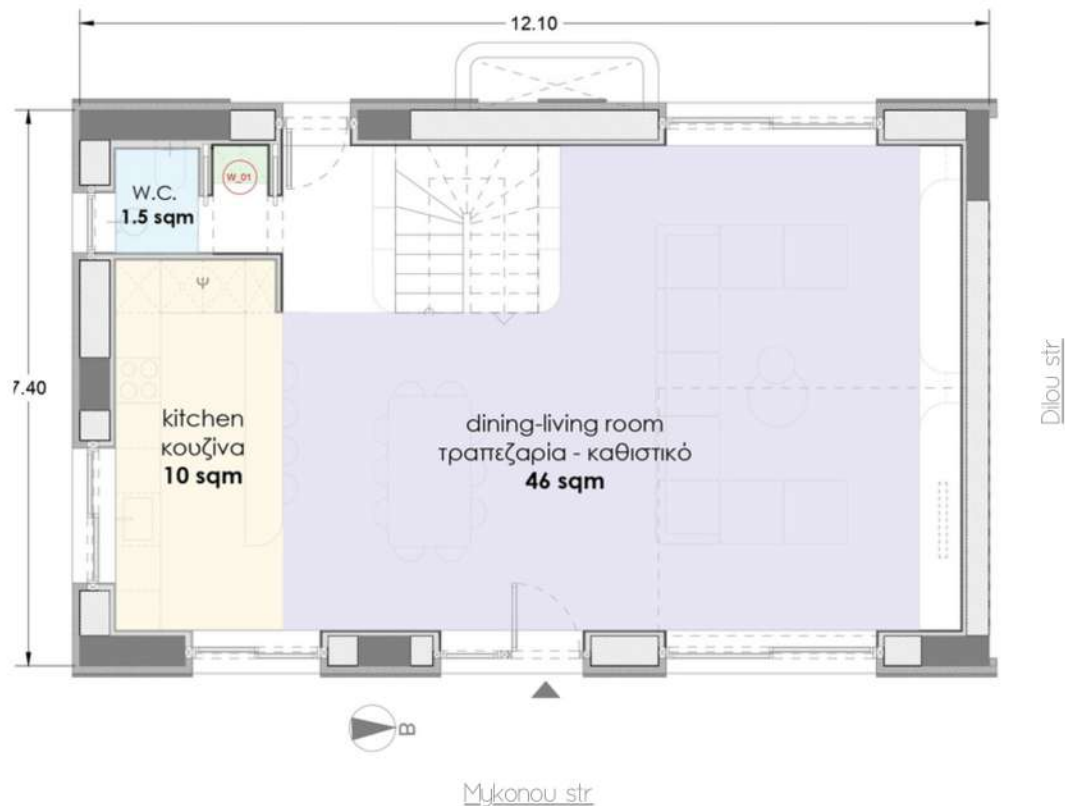


Three-level maisonette, 237.31 m², located in Voula. Includes living room, dining area, kitchen, three bedrooms, office, walk-in closet, three bathrooms, one WC, auxiliary rooms, basement storage, and laundry. Outdoor areas include a 256 m² private garden, BBQ area and swimming pool. Includes underground parking. Positioned in a residential neighborhood with long-term property value.



Square meters in this plan are approximate and refer to the **functional** square meters of the indicated colored spaces

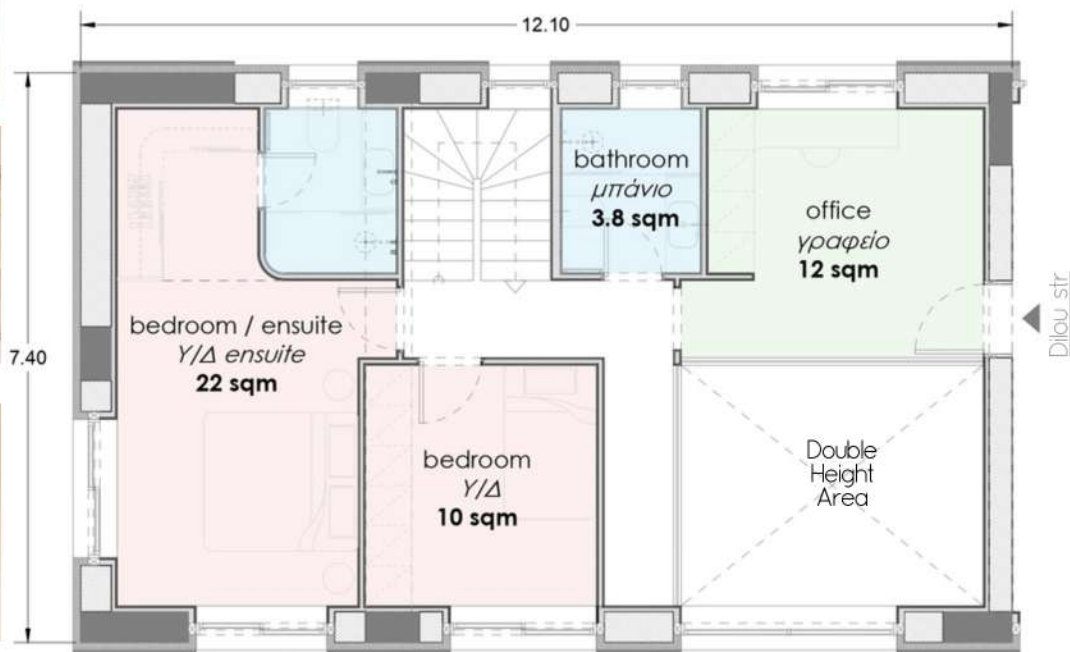




Square meters in this plan are approximate and refer to the **functional** square meters of the indicated colored spaces

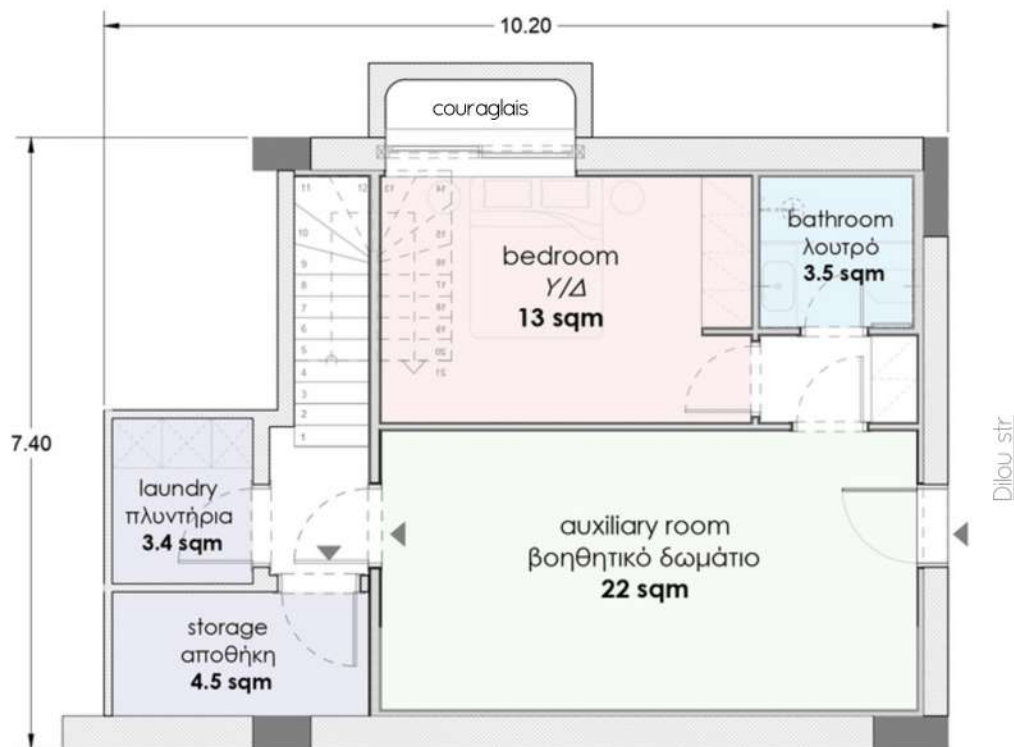


Square meters in this plan are approximate and refer to the **functional** square meters of the indicated colored spaces



Mykonou str

Basement with cour
anglaise for natural air/
light and 3.40 final height



Square meters in this plan are approximate and refer to the **functional** square meters of the indicated colored spaces

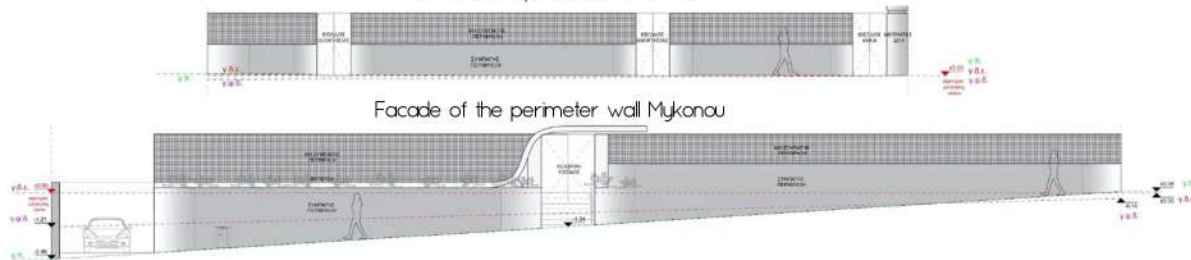


Mykonou str



Facade of the perimeter wall Dlou

Facades of perimeter walls





Materials | Technicals

applies to all units of the Aethria Project

Renders shown in this section may be from other units within the project and are used for indicative purposes only.



Interior Materials & Design

Natural oak wood floors

Built-in bioethanol fireplace

Full-height wardrobes

Large-format anti-slip tiles

Custom-made kitchen



Custom-made kitchen cabinetry, with high-resistance melamine and ergonomic design (up to 247 cm).



Full-height wardrobes, with melamine and built-in LED lighting.



Bioethanol fireplaces, elegantly clad in line with the interior design study.



Eco-friendly solid oak floors, first-grade quality, treated with non-toxic, formaldehyde-free varnishes. Moisture-resistant and lifetime guaranteed. No sanding required.





Materials | Technicals

applies to all units of the Aethera Project

Renders shown in this section may be from other units within the project and are used for indicative purposes only.



Construction & Openings

A++ energy class

High-Quality Wall Construction

Exterior thermal façade STO system

Orthoblock masonry system

Premium Quality DAIKIN Heat Pumps

Glass balcony railings with triplex 8+8mm securit panels.

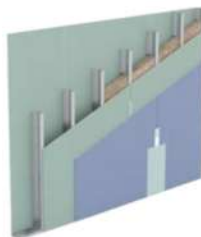
Energy-efficient aluminium frames (ALUMIL)

Four-season double glazing with high thermal and acoustic performance

Security entrance door



Exterior walls built with KEBE Orthoblock insulating bricks and a 10 cm STO thermal façade system, in accordance with the project's energy performance study.



Interior partitions constructed with KNAUF W112 dry-wall system, using water-resistant gypsum boards and mineral wool insulation.



Aluminium frames with thermal break technology by Alumil with double energy-efficient glazing and integrated mosquito screens.



Interior doors by GOLDEN DOOR sleek "less" design, with Convex handles or similar premium brand.



Materials | Technicals

applies to all units of the Aethera Project

Renders shown in this section may be from other units within the project and are used for indicative purposes only.



Heating | Cooling | Smart

Underfloor heating

Individual heat pump per unit

Premium VRV system-DAIKIN

Solar water heater

Photovoltaic System (central)

Smart home installation

Full architectural lighting study -BRIGHT

Alarm pre-installation

EV charger in the Garage



Full installation of REHAU VARIONOVA underfloor heating system, ensuring comfort and performance.



Semi-centralized VRV heat pump system by DAIKIN, with wall-mounted and wired controllers, plus silent-type bathroom ventilation.

Each apartment is equipped with a smart automation system that allows remote or local control via smartphone or tablet of:
Lighting, Heating/Cooling, Hot water supply, Garage door



The building is designed to meet A++ energy standards, equipped with an advanced photovoltaic system for energy efficiency and cost savings.



Full architectural lighting study and installation of spots and rails, in the external as well as the internal of the building by BRIGHT SPECIAL LIGHTING SA

